

ST HUBERTUS HUNTING TOURS



RED DEER HUNTING GROUNDS IN THE CZECH REPUBLIC

SOUTH-BOHEMIA HUNTING GROUNDS



Hunting Area Landscape

HUNTING GROUNDS



A pond in the hunting grounds

Hunting areas are situated in:

- central Bohemia (450–550m above sea level)***
- south Bohemia (430–450m above sea level)***
- near Ceske Budejovice (380–460m above sea level).***

The forest district has an extension of around 70,000 ha. The forest stands are covered mainly with conifers (71%), followed by broad - leaved tree species (29%). Within game preserves, broadleaved species constitute approximately 50 % of the trees. The main species are spruce, beech and oak. The Forest District manages:

- 1. a game preserve of around 1700 ha (Red Deer, Boar, Roe Deer)***
- 2. a game game preserve of around 1500 (Fallow Deer, Mouflon, Wild Boar)***
- 3. a free range of around 1000 ha (Roe Deer, Wild Boar)***

All the above mentioned hunting grounds are part of a protected natural area NATURA 2000 (special protection area for birds and protected site)

GAME PRESERVE N. 1

This game preserve with a an extension of around 1700 ha is located in South Bohemia on the right bank of the Vltava river. The game preserve's relief is characterized by deep stream valleys, plateaus with meadows, pastures and fishponds. The dominant tree species are broadleaved trees (52%), followed by conifers (48%). The grounds are elevated 450–550 m above sea level.

Game

Red Deer, Wild Boar, Roe Deer



A Red Deer in Game Preserve N. 1

Hunt Types

*Individual hunts of Red Deer, Roe Deer and Wild Boar, Wild Boars
Driven Hunts.*

Remarkable Trophies in the last years

Red Deer 264.46 CIC

Red deer – 262.46 CIC

250.89 CIC

**246.64 CIC, 240.18 CIC,
238.11 CIC, 236.99 CIC,
234.00 CIC**

Wild boar – 122.90 CIC

Accommodation



Hunting Lodge in Game Preserve N. 1

A very pleasant accomodation is assured by a hunting lodge with 6 beds, an apartment with 4 beds, guest houses and hotel-chateau near the hunting grounds (up to deluxe level). The accommodation prices in the hunting lodge are the following:

- Room: 20 EUR**
- Entire lodge: 200 EUR**
- Suite: 30 EUR**

Board

Guests can prepare their meals in a fully equipped kitchen. On demand hunting staff can prepare cold and hot meals. If you choose a stay in hotel-chateau we can arrange a full board stay with meals in some of the best restaurants in the hunting area.

GAME PRESERVE N. 2



A Fallow Deer in Game Preserve N. 2

Location

This game preserve is set in South Bohemia on the left bank of the Vltava river. The hunting grounds are mainly covered with coniferous and broadleaf forests, old oak tree avenues, meadows, small fields and lakes. It is situated at 380–575m above sea level and has an extension of around 1500 hectares.

Game

Fallow Deer, Mouflon, Wild Boar

Hunt Types

***Individual commercial Fallow Deer, Mouflon, and Wild Boar hunts, driven
Wild Boar hunting***

Remarkable Trophies in the last years



Fallow Deer 222.29 CIC POINTS

Fallow Deer

***– 222.29 CIC, 221.21 CIC, 220.45 CIC,
219.59 CIC, 215.91 CIC, 212.96 CIC,
208.18 CIC, 206.68 CIC, 204.86 CIC***

Mouflon

***– 234.25 CIC, 227.80 CIC, 226.20 CIC,
224.40 CIC***

Wild boar

– 129.45 CIC, 128.45 CI

Accommodation



Hunting Lodge in Game Preserve N. 2

A very pleasant accommodation is assured by a hunting lodge with 18 beds, guest houses and hotel-chateau near the hunting grounds (up to deluxe level). The accommodation prices in the hunting structure's hotel facilities are the following ones.

Hunting Lodge

Room: 20€

Suite: 30 €

Gamekeeper's lodge:

Room: 30 €

Board

Guests can prepare their meals in a fully equipped kitchen. On demand hunting staff can prepare cold and hot meals. If you choose a stay in hotel-chateau we can arrange a full board stay with meals in some of the best restaurants in the hunting area.

OUR PERSONALIZED PACKAGES

We prefer a personalized offer according needs and wishes of our guests. Our staff together with staff of the hunting structures is at your disposal in order to manage a customised package suitable to assure a very pleasant, funny and relaxing stay in favor of hunters and no-hunter guests. We can also arrange a guided tour in South Bohemia with its many natural, historical and architectural gems that are well described in the following pages. We can arrange a very pleasant stay at Prague (150 km from hunting grounds) as well.

SOME TOURIST AMENITIES IN THE NEIGHBOURHOOD OF THE HUNTING GROUNDS

SOUTH BOHEMIA



Lipno Reservoir

South Bohemia is a dream paradise for holidays whether you decide to spend time sightseeing or relaxing. The countryside here offers endless possibilities for visiting places of natural beauty, but also has lots of historical monuments and great conditions for cycling and water sports. Include some charming historical cities into your programme, the most

charming of which are Český Krumlov and the village of Holašovice; both places have been listed as UNESCO monuments! A great tip for romance is the neo-Gothic Hluboká Chateau, fans of sports and active holidaying are catered for at the Lipno Reservoir.

ČESKÝ KRUMLOV



Český Krumlov

A town that reaches to the skies above a bend on the River Vltava, Český Krumlov is a pearl of Renaissance architecture and a place where the sumptuousness of the local castle, maze-like alleyways, richly decorated coats of arms of burghers houses, and wonderful floral gardens are harmoniously interwoven; at the same time, it boasts medieval pubs, ale-houses, galleries and graphite mines. Thanks to its unique preserved medieval core, Český Krumlov is included on the UNESCO list. At the height of its fame, Český Krumlov could compete stoutly with the most important European royal courts, mainly thanks to the Rosenberg family, who chose the town as their residence. The Rosenbergs gradually came to rule a large part of South Bohemia. Enchanted by the Italian Renaissance, they built a town and residence, and in so doing contributed to the prosperity of the entire region. One of the most famous members of the family was Petr Wok von Rosenberg, who gathered a remarkable collection of art and products of nature that rivalled that of Rudolph II at Prague Castle. Among Český

Krumlov's attractions is its Baroque theatre, which is one of the oldest preserved chateau theatres in Central Europe. Alongside the theatre building itself, visitors can view hundreds of decorations, costumes, and props, as well as an orchestra pit, theatre machinery and an extensive collection of original scripts. The theatre serves only as a working theatre museum today. However, a unique revolving auditorium, set against the natural backdrop of the Castle Park, offers unforgettable theatre performances beneath the night sky.



Český Krumlov Theatre

The Renaissance facades of painted houses, traditional artisan shops and medieval taverns create an inimitable labyrinth in which you'll want to simply lose yourself. But there is more to the historical centre than the past. Why not visit for instance the renowned Egon Schiele Gallery where you can discover Český Krumlov through the artist's pictures? Another worthwhile stop is the Seidel Photographic Studio, whose unusual inter-war atmosphere will surprise you; it boasts an inexhaustible number of unique period photos, photo-postcards and glass negatives. Throughout the year Český Krumlov offers countless cultural events, such as FIDELIO

classical music concerts, the Five-Petalled Rose Celebrations, an International Music Festival and a festival of Baroque art.

HLUBOKÁ CASTLE



Hluboká Castle

Hluboká Castle is the ideal destination in South Bohemia for history buffs, incorrigible romantics and even those who worship sport. The castle owes its current appearance to the Schwarzenberg family and is often described as the most beautiful Czech castle. That's how one could sum up the magical Hluboká Castle, which got its present appearance in the 19th century after a Neo-Gothic reconstruction. Hluboká Castle was originally founded as a guardian castle in the middle of the 13th century by Bohemian kings. Within the context of the Romantic modification of the noble residence, the Schwarzenbergs founded an expansive landscaped park in the mid 19th century. The castle with its 140 rooms and 11 towers offers several tour variants. During the tour of the castle, one can peek inside private rooms and lavish ceremonial halls with carved paneling, coffered ceilings, elegant furnishings, crystal chandeliers and rich collections of paintings, silver, porcelain and tapestries. You can also check out the lookout tower and the

castle kitchen with lots of kitchen equipment preserved from the turn of the 19th and 20th centuries. In the Castle riding hall, you can view the exposition of South Bohemian Gothic and Dutch masters from the collections of the Aleš South Bohemian Gallery.

TŘEBOŇ



Třeboň

The location of Třeboň, a city in the middle of a protected landscape area in South Bohemia, makes it one of the most popular tourist destinations in the Czech Republic today. Not only does the city possess a historical centre and spas, but it is surrounded by forests and lakes of the “Třeboňská Pánev” (Třeboň Lowlands – 400 to 500 metres above sea level). The city lies near the Austrian border between the cities of České Budějovice and Jindřichův Hradec. The history of Třeboň dates back to the 12th century. Its unique and wellpreserved historical complex of castle and burgher houses, the Augustinian Monastery and church, the fortification with town gates – this was all founded through the wealth of the local noble family. Their prosperity and power is most notable in the spectacular reconstruction of the palace into a representational residence. The city was declared a municipal historical preserve in 1976. The original name of the settlement was Wittingau or Witknow, Witigenowe(Vítek’s meadow). It was named

after its holder Vítěk. The name Třeboň is probably derived from the old Czech phrase ,tříbit půdu‘ which meant to refine or cultivate soil. The Czech name Třeboň was first documented in 1365. The city’s surroundings, originally being swamps and wetlands, have been transformed into an ingenious system of lakes and ponds over the centuries. This area is now sought after by nature lovers for its unique natural beauty as well as by scientists for its concentration of unique natural biotopes. The area, collectively known as “Třeboňsko”, meaning Třeboň and its surrounding area, is not an original authentic landscape but rather is a land reconstructed by human hands from Medieval times. Nonetheless, it was added to UNESCO’s list of 400 biosphere reservations in 1977. The protected landscape area of Třeboňsko (700km²) was declared in 1979. Třeboň is concisely characterized by three symbols: the five-petalled rose, the carp, and the spa. The five-petalled rose refers to the city’s history, especially to its period of greatest development during the reign of the Rožmberk (Rosenberg) family.



Rožmberk Chateau

Not even Petr Vok, an educated and art-loving feudal lord, so charming and attractive to women, had children, and so after his death in 1611 the 400 year course of the aristocratic family of Rožmberks through the Czech history ended. The results of their presence in the Southern Bohemia are a large number of fishing breeding ponds that generated a substantial part of their profits and gave the countryside an unrepeatably charming. Not even three groups of ten alchemists headed by the famous Dr. John Dee and Edward Kelley

invited to Třeboň by Vilém of Rožmberk were able to prepare a potion guaranteeing the birth of a descendant. He died childless and his younger brother Petr Vok inherited his vast estate, but also his debts. He gradually sold several family residences and moved with his entire court to Třeboň, which he got rebuilt in Renaissance style for his comfort and the storing of a unique archive and collections only commensurate with collections of the Emperor Rudolf II at the Prague Castle. Renaissance chambers of the Rožmberk nobility and rooms of courtiers and ladies-in-waiting give us the image of the life in noble courts of those days, for example of the rules for the art of fine dining and feasting. During holidays it is possible to visit the stables, kitchen just for dogs and underground casemates which were converted into wine cellars later on. Also the tour of the remarkably furnished private suites of the last owners, Schwarzenbergs, is possible. As for the Třeboň carp, there are more than 500 lakes in sixteen connected networks in the city's surroundings.



Sunset on a fishing pond

This area is the largest producer of freshwater fish not only in the Czech Republic, but in all of Europe. The spa tradition in Třeboň dates back to 1883, when peat was a local source of healing treatments used in the spas. Nowadays the modern spa complex focuses on the treatment of bones, muscles and joints as well as relaxation stays. One of the modern symbols of Třeboň is doubtlessly the bicycle – this is one of the best ways to spend an active vacation. Another symbol of the Třeboň of today is the smokestack,

representing the sweet aroma of beer brewing to perfection in the local Regent brewery

HOLAŠOVICE VILLAGE



Holašovice

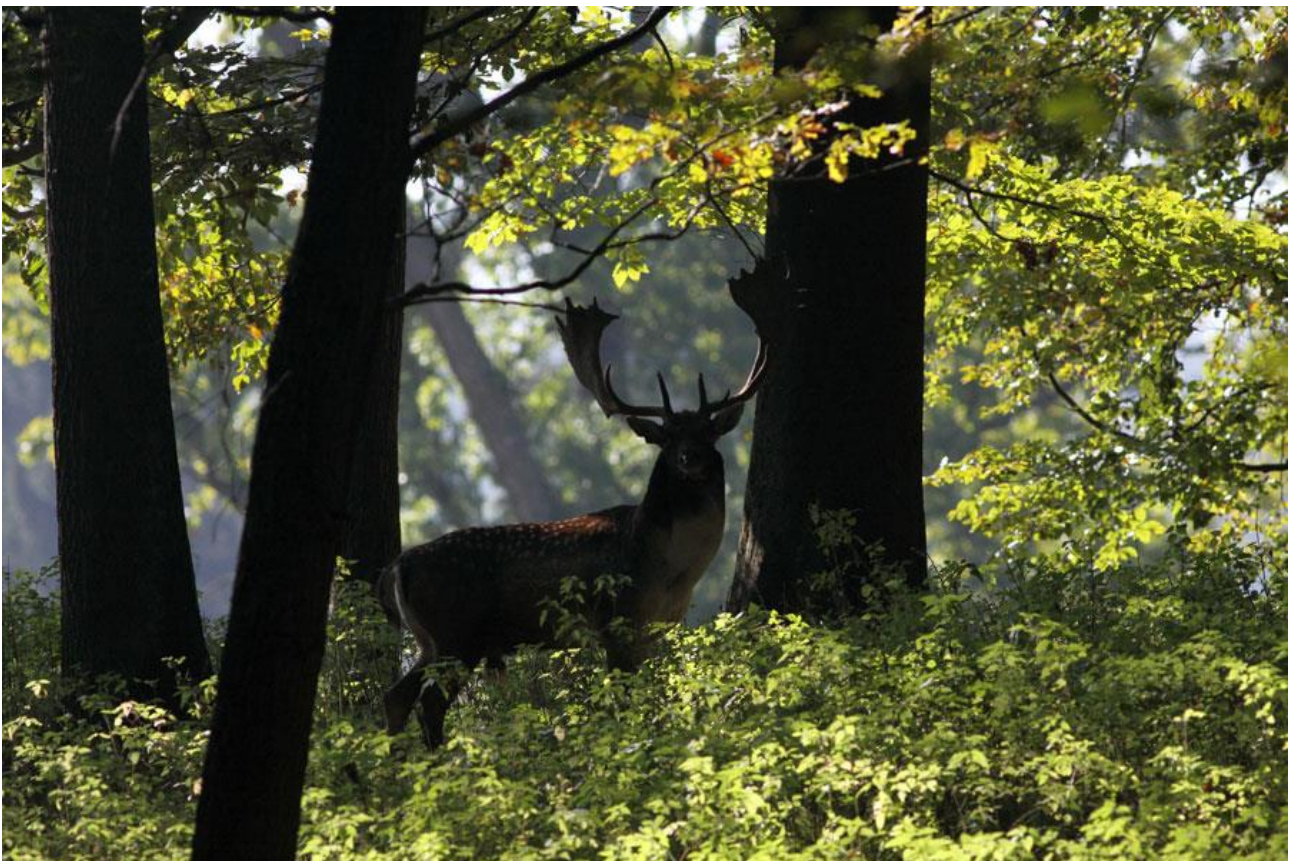
You would be hard put to find another place offering so much charm in such a small space. Holašovice, situated in the middle of the harmonious landscape of Southern Bohemia, is surely the most charming village in the whole of the Czech Republic. The pride of this place is the wonderful Baroque farms set around the extensive village green, which even ensured inclusion of Holašovice in the UNESCO world heritage list. It sounds unbelievable, but Holašovice has retained the same number of buildings for the whole 800 years of its existence. To this very day, you can thus see 17 farms with barns and stables, but also a blacksmith's, two taverns and the small Chapel of St. John of Nepomuk. But the village is no open-air museum. Most of the houses here are inhabited permanently and the locals hold several cultural events, among which the Shrovetide festival in February, Building of the Maypole in April and the Rural Festival in July with its Old Bohemian Fair stand out. The village gained its current appearance in the 19th century, when the local rural class escaped from servitude and the farmers could thus afford to convert their houses in the flamboyant style of the so-called Rural Baroque. Gaily coloured gables thus began to bloom on what was originally an austere medieval village green, elaborated down to the very last detail, which people nowadays come from

all over the world to admire. When touring Holašovice, make sure to also visit farm number 6. In the farm here, you can see what rural life was like and how the people farmed until the 1st half of the 20th century. Don't forget to visit the cosy ceramics workshop too, where you can have an original mug, jug, cup or nameplate for your door made, or a number for your house with typical Southern Bohemian motifs. Do you like mysterious places charged with strange energy? Then set out for the "Holašovice Stonehenge". A beautiful view opens out over the surrounding area from this Celtic stone circle, built on a raised point above the village. You will see not only Holašovice itself, but also the powerful silhouette of one of the Hluboká nad Vltavou Chateau. You can above all enjoy the unique atmosphere of this place during solstice celebrations.

***SOME PICTURES OF HUNTING AREA, HOOFED GAMES,
TROPHIES***









RED DEER 244,47 CIC POINTS (2014)



MOUFLON 226,20 CIC POINTS (2012)



FALLOW DEER 222,63 CIC POINTS (2014)



FALLOW DEER 222,29 CIC (2013)



WILD BOAR HUNTED IN 2014



ROEBUCK HUNTED IN 2014



WILD BOAR DRIVEN HUNT DAILY GAME BAG 2014

***SOME PICTURES OF HOTELS, CHATEAU AND RESTAURANTS
NEAR THE HUNTING ROUNDS***



CHATEAU NEAR HUNTING GROUNDS



A ROOM OF CHATEAU



SPA IN 5 STAR HOTEL NEAR HUNTING GROUNDS



ROOM OF 5 STAR HOTEL



DINING ROOM OF 5 STAR HOTEL



RESTAURANT WITH A MEDIEVAL SETTING