

ST HUBERTUS HUNTING TOURS



VIP HUNTING OFFER

VIP HUNTING STAY IN SOUTHERN MORAVIA



Aerial view of the main residence in the hunting area

FEATURES OF THE HUNTING AREA

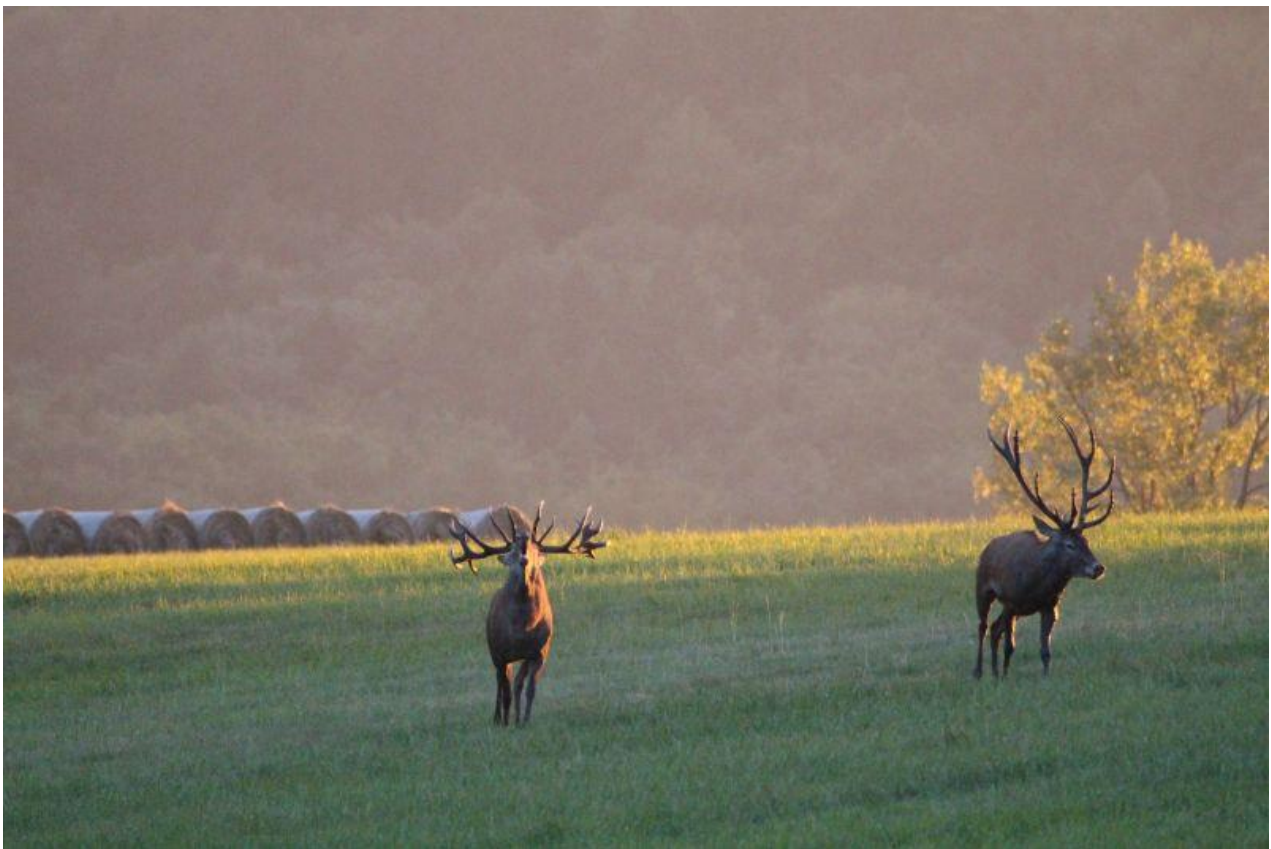
Let us to invite you to one of the most beautiful game reserves in the Czech republic. It located in South Moravia, to be more precise on the border with Slovakia, in the south-east corner of the picturesque White Carpathians Protected Landscape Area. This deer park - with an extension of 1565 ha and an elevation of 300-580 meters above sea level - is one of the biggest game preserves in the Czech republic. Most of the hunting grounds are covered by deciduous forest, mainly beech and oak, with spruce mixed in. White Carpathian meadows form the heart of the game preserve. Various kinds of orchids grow in these meadows, which cover an area of approximately 200 ha. The entire game preserve is located in the Natura 2000 European conservation area and includes also three ponds with a total area of 2.5 ha that can be used for fishing.



Fallow Deer in the game preserve

Game-crop fields, a newly reconstructed hunting lodge, different hunting facilities and a shooting range are located inside the preserve area. Main species of the game preserve are fallow deer and red deer with small

population of roe deer and wild boar as well. The fallow deer come from the original wild population released in the 1960s with further introductions of bucks to revitalise the population. The red deer population comes from Hungary and was released in 2004. Nowadays fallow deer and red deer trophies shot in the game preserve often pass 210 CIC Points. Qualified employees take care of hunting grounds and animals. There are about 40 feeding points where hard feed, bulk feed and pulp feed are given to the animals.



Red Deer in the game preserve during their rut season

Hunting days can occur not only inside the game preserve, but also in hilly free range with an excellent population of moufloun, roe deer, wild boar, red deer and fallow deer. Hunting staff also manages pheasant and duck shooting days. Trophy game is hunted by stalking or still hunting with the aid of expert hunting guides. The grounds contain more than 60 hides, 30 deer stands and a 25-km network of stalking trails. The sole proprietor and manager of this absolutely private hunting estate is not only a passionate hunter, but one of the most successful businessman of the Czech republic since the downfall of iron curtain. The owner invests a lot of time and money

in development of this VIP hunting area. His immense passion for hunt and intense emotional connection with South Moravia moves business point of view to the background. He takes pride in verifying that client is completely pleased with his stay, during which time client was able to hunt in a beautiful natural scenery, be acquainted with old czech hunting traditions, appreciate excellent good food and wine, relax in the spa and much more. The basic goal of a stay in this hunting area consist in experience a modus vivendi characterized by living in close contact with nature, slowly tasting pleasures that life offer to us and feeling in harmony with ourselves and the world.



Landscape on White Carpathians

Among the many indoor and outdoor activities that clients can practice during their stay there are fishing, trekking, mountain biking, tennis, golf training, motocross, trip with quad or water motor, billiard, football, guided tour in South Moravia with its hills, castles with nice parks and wine cellars. Offer is suitable to satisfy also the most demanding guests that can spend very intense, funny and relaxing days. Staff gives special attention to needs and wishes of women and children-teenager with a complete wellness

offer, shopping guided tours and many outdoors activities for children-teenagers. This enterprise guarantees a pleasant stay in favor of all the members of your family.

THE RESIDENCE AND HUNTING LODGE

The main residence – built with a local stone – is a perfect union between rustic exteriors and modern high tech-luxurious interiors. A stay in this residence assures an utmost attention towards guests starting from breakfast up to nighttime in one of the delicately furnished apartments. The owner's philosophy clearly defines, that entire service must be a top level one: food, wine, accommodation and so on. Wine and food offer includes czech and international cuisine and surprises international guests with sublime Moravian wines and game-specialities prepared according rural handcrafted works (past international guests consider that here you can taste the best smoked meat of the world). Relax is guaranteed in an amazing wellness center with a sulphurous hot spring, a large swimming pool, sauna, turkish bath, whirlpool, ice-room and a massage room with many different treatments. Last but not least – this residence is a treasure chest gathering the owner's hunting trophies and artworks, especially the paintings. You can admire trophies of animals coming from all over the world and great artworks of not only Czech famous painters. At disposal of the hunting guests there is also a typical hunting lodge that is especially recommended for guests that would like to spend their stay in company with their hunting friends, having the comfort of absolute calm and privacy.

PERSONALISED STAYS

The owner of this extraordinary place prefers a personalised offer according needs and wishes of his guests. Our staff together with staff of this enterprise is at your disposal in order to manage a customised package suitable to assure a very pleasant, funny and relaxing stay in favor of hunting guests and no hunter-guests. We can also arrange a guided tour in South Moravia with its many natural and architectural gems that are well described in the following pages.

SOME PHOTOS OF THE RESIDENCE AND HUNTING LODGE







TOURIST AMENITIES IN SOUTH MORAVIA
LEDNICE-VALTICE COMPLEX



Lednice Chateau

There are not many places in the world which have received such care as the elegant area around the spectacular Lednice and Valtice chateaux. An absolutely unique park has been created here over the centuries, full of rare tree species, romantic little buildings, fishponds and beautiful little corners. The Lednice-Valtice Complex, which has been included in the UNESCO list, is known as the Garden of Europe to this very day. The huge plots of land on both sides of the current national border between Moravia and Austria were cultivated by generations of Lichtensteins for the whole of their reign lasting 600 years. One of the most powerful families in Europe of that time, they created an elegant French garden and beautiful English park here in an absolutely ostentatious manner. They had romantic little buildings of many styles set into it as an example of the true life of luxury lived by the wealthy aristocracy at that time. Chateau Lednice gained its ostentatious neo-Gothic appearance thanks to conversion in the middle of the 19th century. At that time, it was used for summer meetings of the European aristocracy.

The other chateau – Valtice – was the spectacular residence of the Austrian and Moravian Lords of Lichtenstein. It is known not only for its beauty, but also the long tradition of winemaking. Grape vines were brought here by the Roman legion of Emperor Marcus Aurelius, who regarded the area of Pálava as suitable for cultivation of wine. You can thus enjoy not only a unique cultural experience, but also a glass of superb Moravian wine in the Wine Salon here. The park here, surrounding both chateaux, is one of the most luxurious landscapes in Europe.



Lednice Park and Minaret

You can admire the landscaped countryside here with its many fishponds covered with water lilies, green forests, meadows full of flowers and rare tree species. To please and surprise the guests, Viennese architects incorporated many small romantic buildings into the landscape, which lend the place a unique character. You can thus climb to the top of a minaret that is 60 m high, which offers an unforgettable view over the whole complex, have a pleasant picnic by the “Rendez-vous” hunting chateau or take a trip on a boat right up to the ruins of “John’s Castle”. If you enjoy cycling, you can take a leisurely trip through the chateau park here by bike.

OTHER AMENITIES IN THIS AREA

PÁLAVA

There are places on Earth where you simply feel as if you are in paradise. The South Moravian region of Pálava, which is a part of UNESCO Lower Morava Biosphere Reserve, is undoubtedly one of those places. Visit this beautiful landscape of dazzlingly white rocks, blossoming meadows, lowland forests, romantic ruins of medieval castles, crystal-clear lakes and sun-drenched vineyards. All of this in a region that has one of the warmest climates in the Czech Republic and offers excellent opportunities for hiking, cycling, water sports and dining which you will remember for a long time to come.



Pálava – Devín Mountain

Where is the best starting point to explore the beauty of the Pálava Region? Most would say it is the fairytale town of Mikulov, whose dominant feature is the Baroque chateau perched high on a cliff. The town of Mikulov is situated in the very centre of the wine-growing region of South Moravia in the magnificent Pálava nature reserve. In addition to stops at local and family wine cellars or tasting of wines in wine bars and wine restaurants,

the visit also includes the historic chateau cellar with expositions of traditional viticulture. The huge richly decorated Renaissance wine cask with a volume of 101,400 litres and weight of 26.1 tonnes is the largest one in the Czech Republic. The Museum expositions represent, in addition to the local viticulture, the history of the chateau and the aristocratic family of Dietrichsteins, archaeology and attractive seasonal exhibitions.



Mikulov and its castle

Another gateway to the region is the wine-growing village of Pavlov, which is situated at the foot of the highest peak in Pálava, Děvín. Also in the vicinity are some of the best attractions in South Moravia – the wine trails. Along marked paths you can set off to the Pálava Hills on bike or on foot, and as an added bonus you can taste the excellent wines, which are rated as among the best in Europe. You will enjoy your stay here best of all if you arrive during the autumn wine festival. The list of places to visit in the Pálava Region is virtually endless. For example, you can set off in the footsteps of the prehistoric mammoth hunters to Dolní Věstonice, where the world-famous Věstonice Venus statue was found – one of the most valuable treasures of the Czech Republic. If you are drawn to nature, just put on some sturdy shoes and head off on a hike. Your journey can begin by exploring the ruins of the Dívčí Castle, which before being plundered by Swedish troops was a showcase border castle. A real balm for the spirit is the ascent to Soutěska (meaning narrows), which separates Děvín, the highest point of Pálava, from the lower Obora. The steep rock walls here could practically

serve as a geology textbook. Do you like panoramic views of beautiful landscapes? Then be sure to head to the top of the Martinka limestone wall, which rises above Horní Věstonice. Meanwhile, a large flock of screeching jackdaws circles overhead – by now an integral part of the landscape. Your steps should also take you to the ruins of the Sirotní (Orphan) Castle, to which many romantic legends are ascribed. It is definitely worthwhile to come here in the evening, when the setting sun paints the castle and the rocks with beautiful colours.



Sunset in Pálava

What would a trip to Pálava be without visiting the Nové Mlýny (New Mills) dam? The upper and lower reservoirs are ideal for recreation, relaxation and water sport – especially windsurfing. The central reservoir, on the other hand, is a renowned nature reserve with manmade islands for nesting birds. Should it seem that you have spotted a little church, indeed you have. It is a reminder of the flooded village of Mušov.

WELCOME TO SOUTH MORAVIA!

Tourist information above mentioned are base on official website:

www.czechtourism.com

